

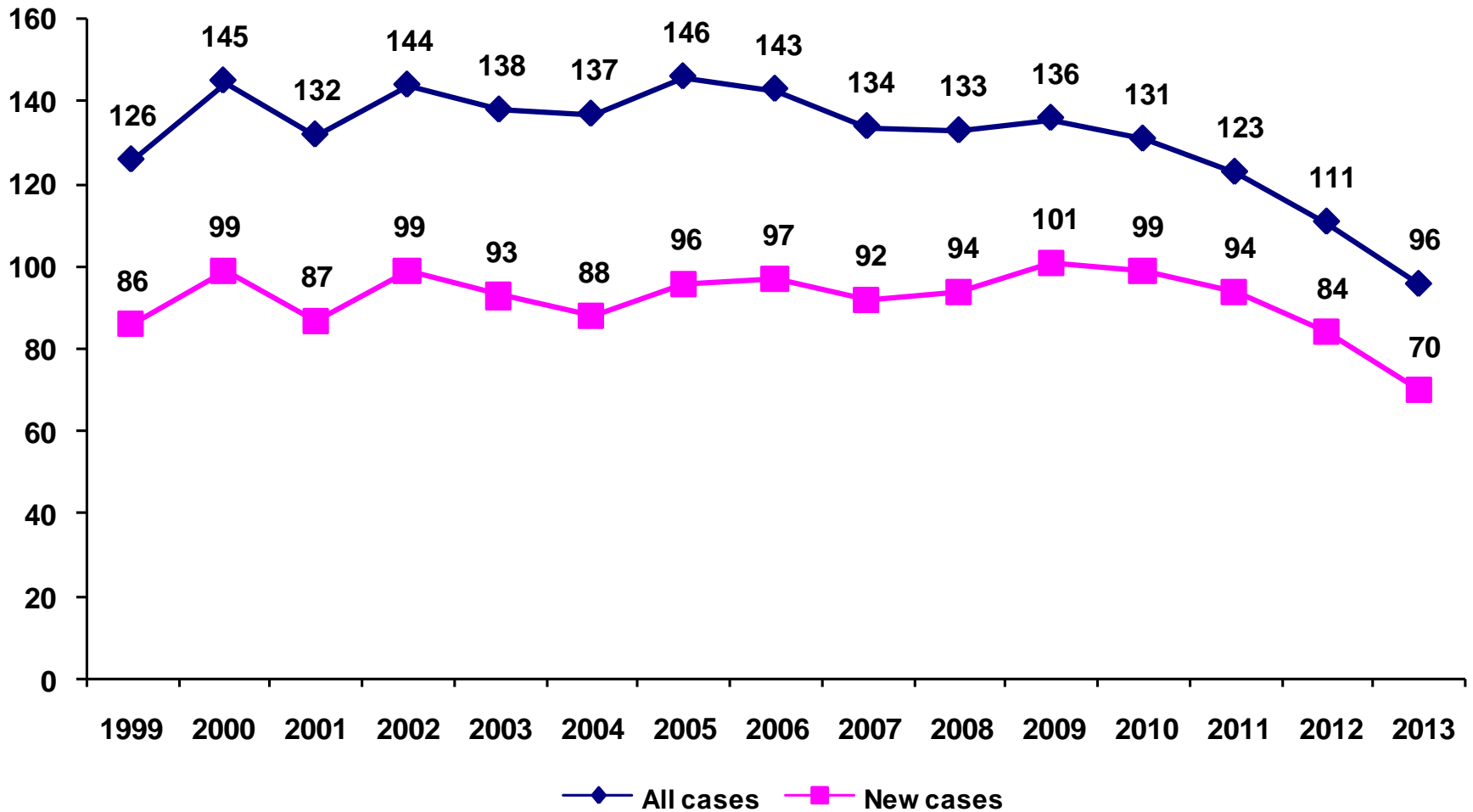
# **TB in Georgia 2014 report**

NTP Database Manager

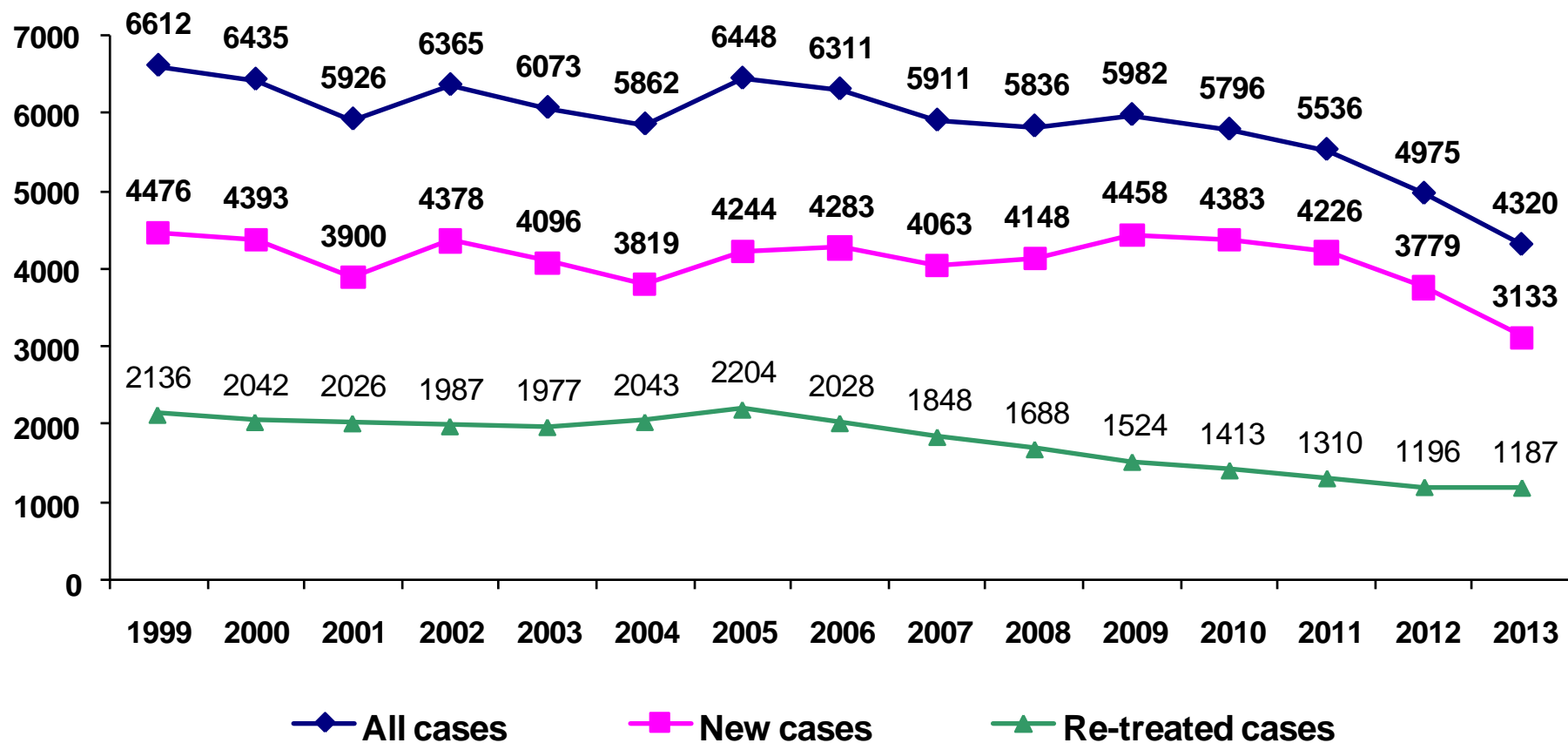
U. Nanava

06-06-2014

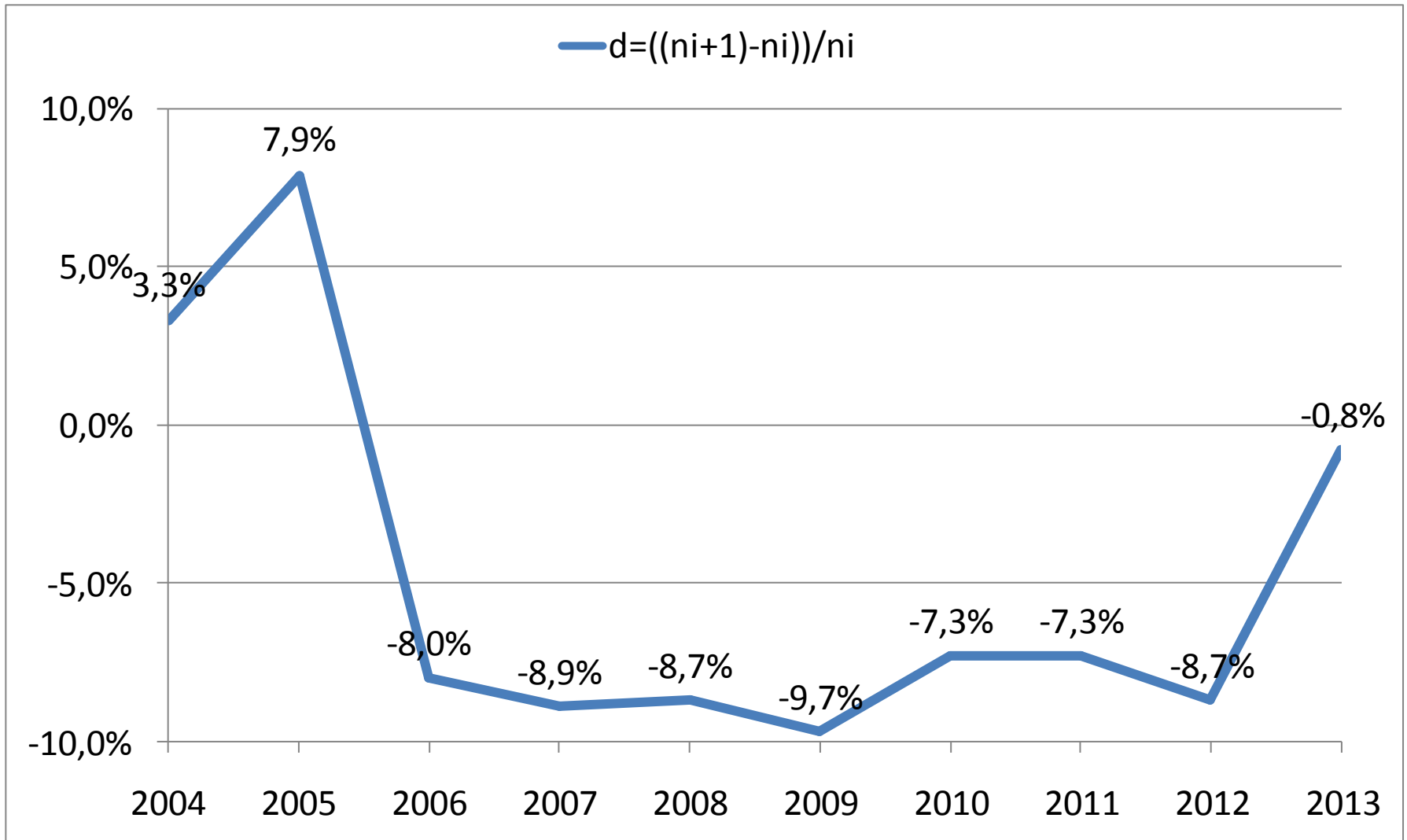
# Notified TB cases ( per 100,000)



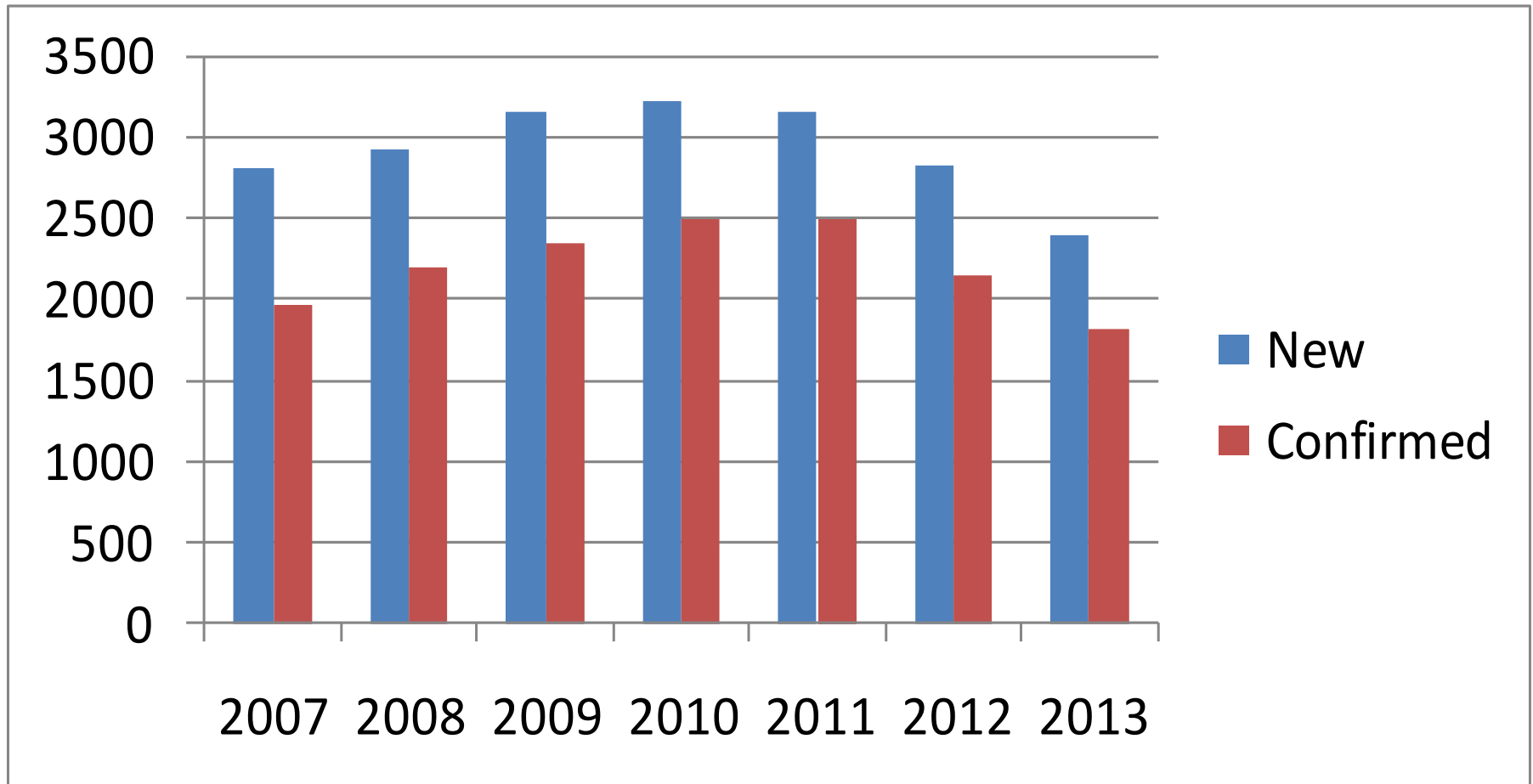
# Notified TB cases (absolute numbers)



# Rates of change in re-treated TB case notification (%)



# Bacteriologically confirmed TB cases among new pulmonary (afb+ and/or culture+)

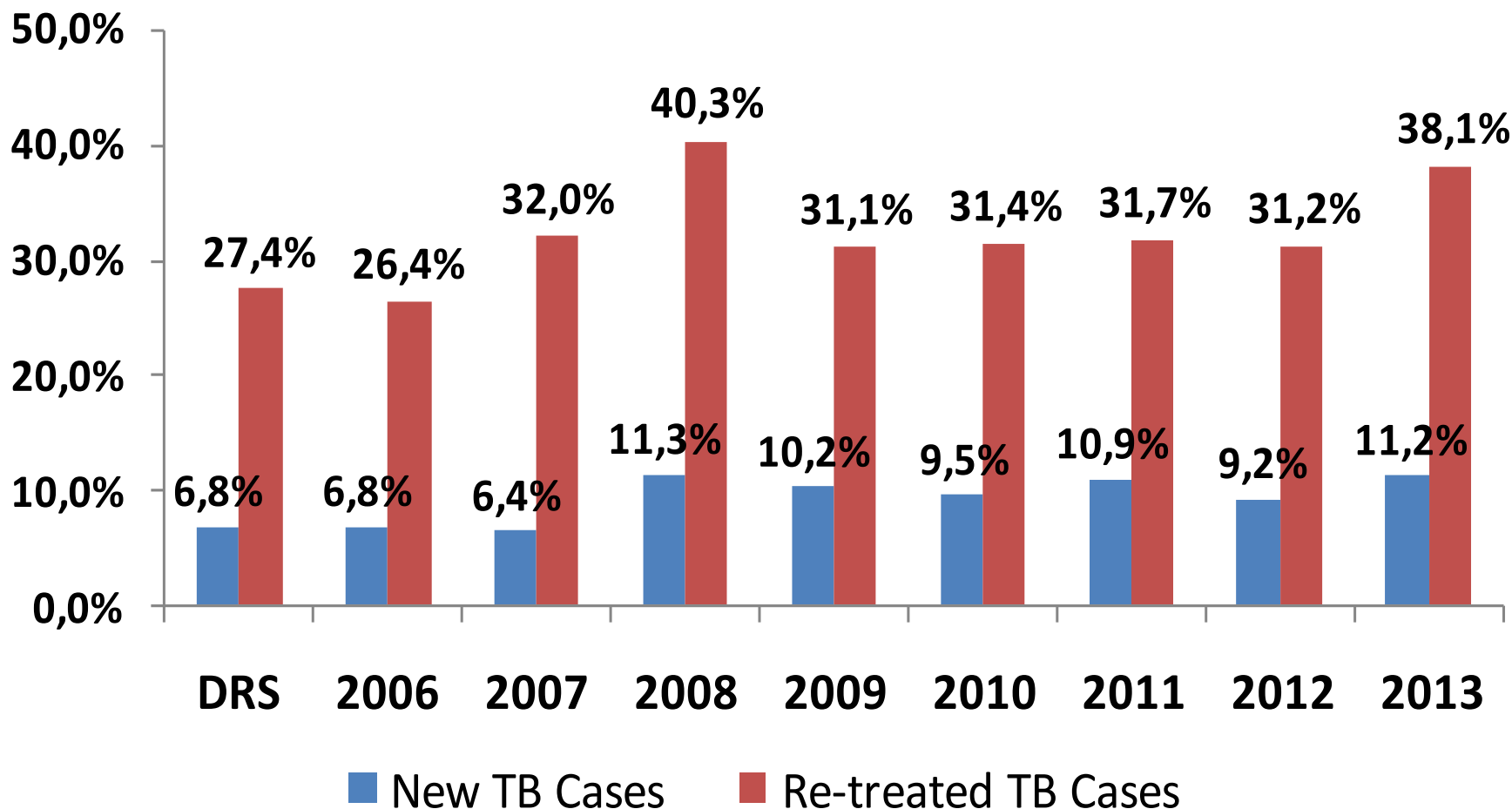


**70% 75% 74% 77% 79% 76% 76%**

# Drug Resistance Surveillance

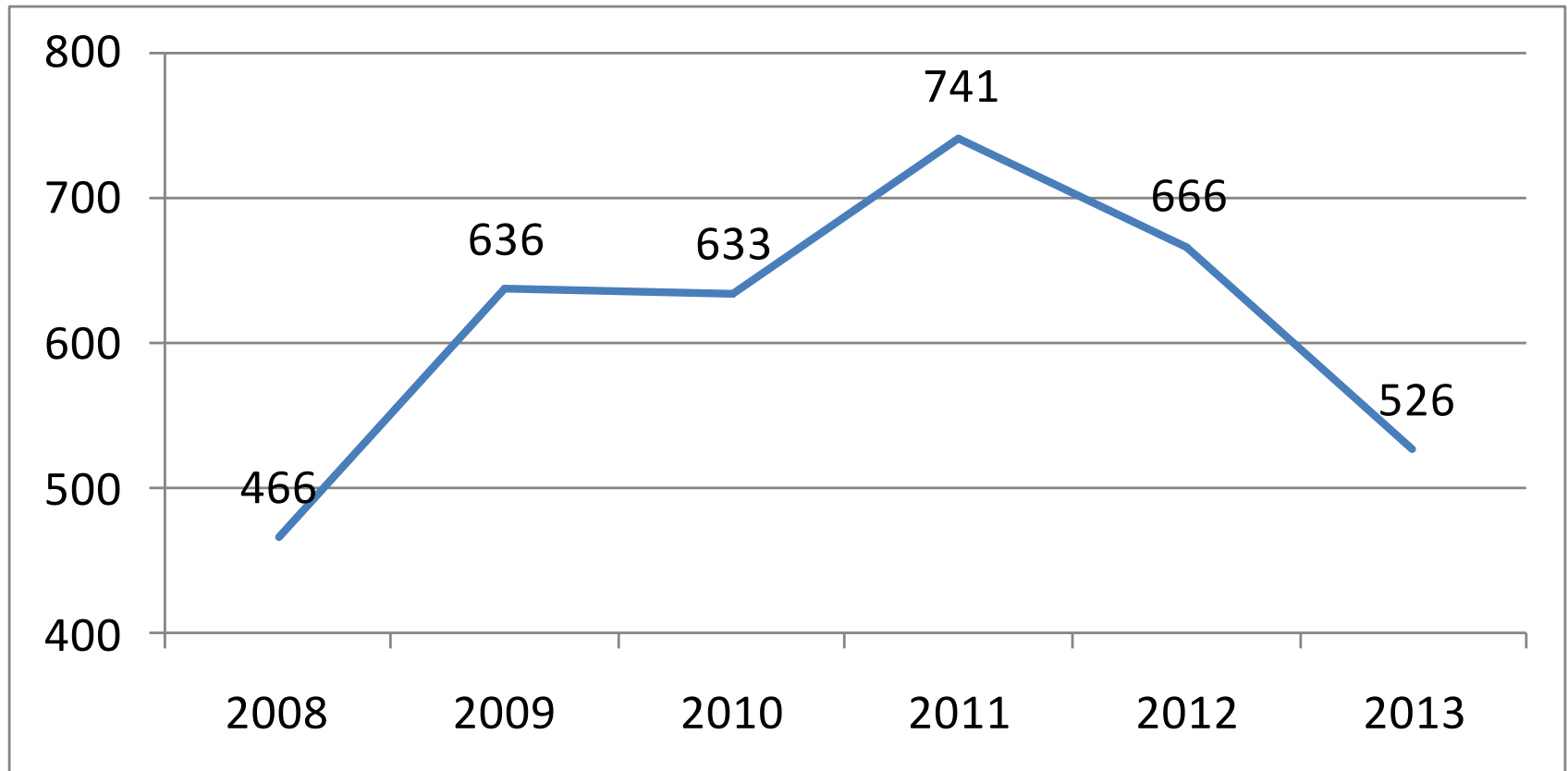
(DRS – Drug Resistance Survey conducted between July 2005 and June 2006)

## MDR-TB prevalence, pulmonary cases



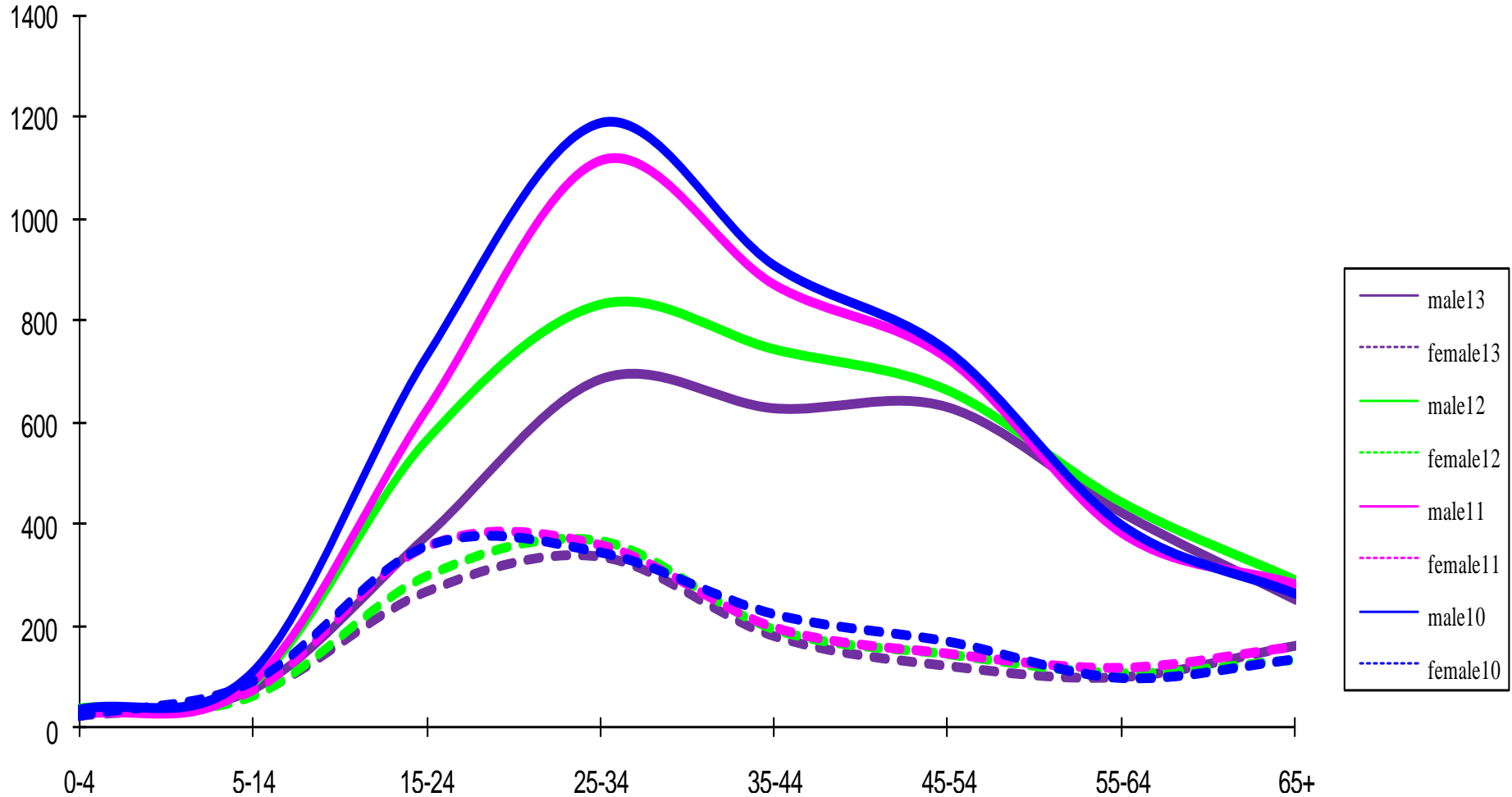
# Cases enrolled in 2<sup>nd</sup> line treatment

(absolute numbers)



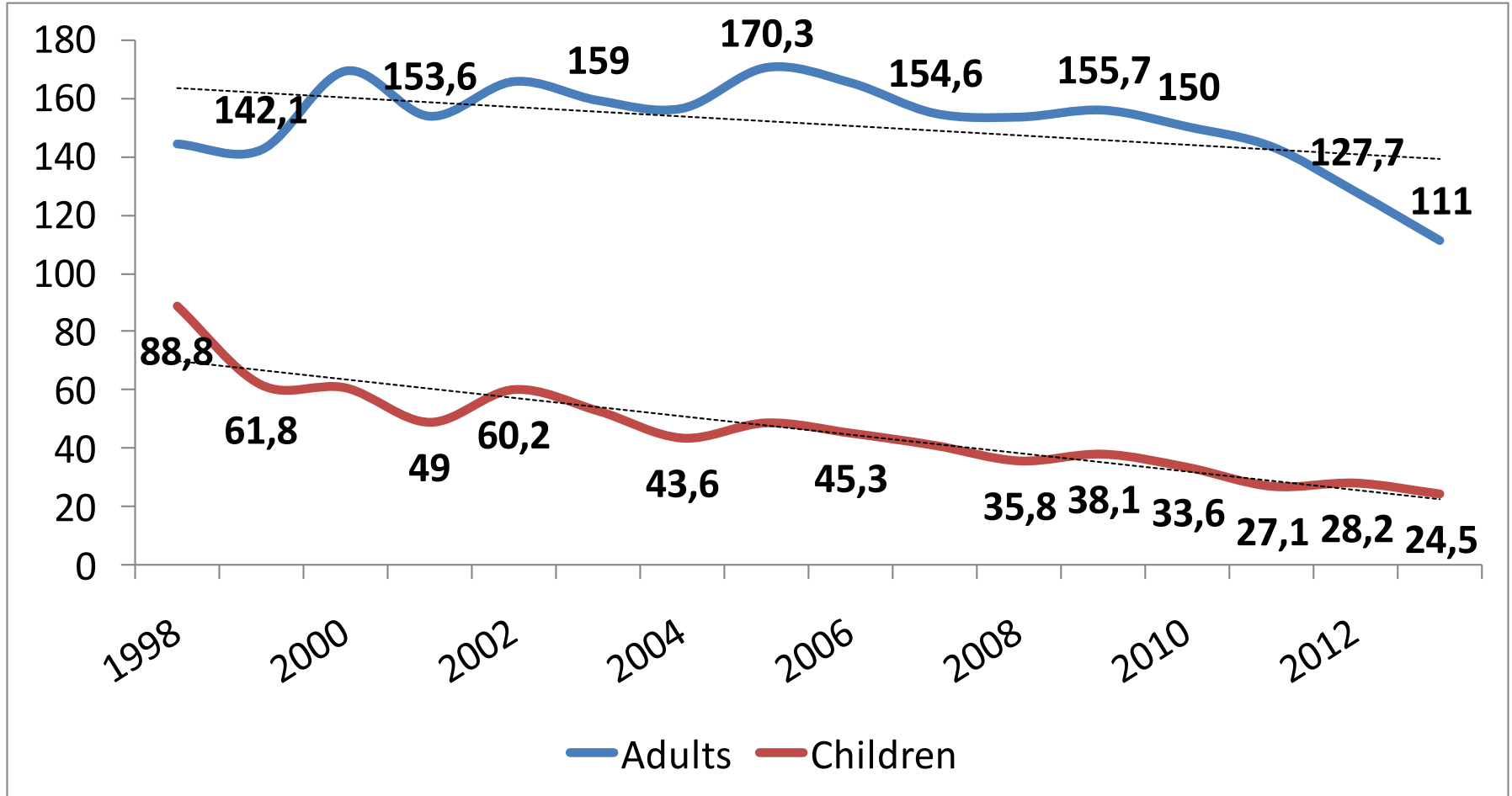
# TB by sex and age-groups (2010-13)

---



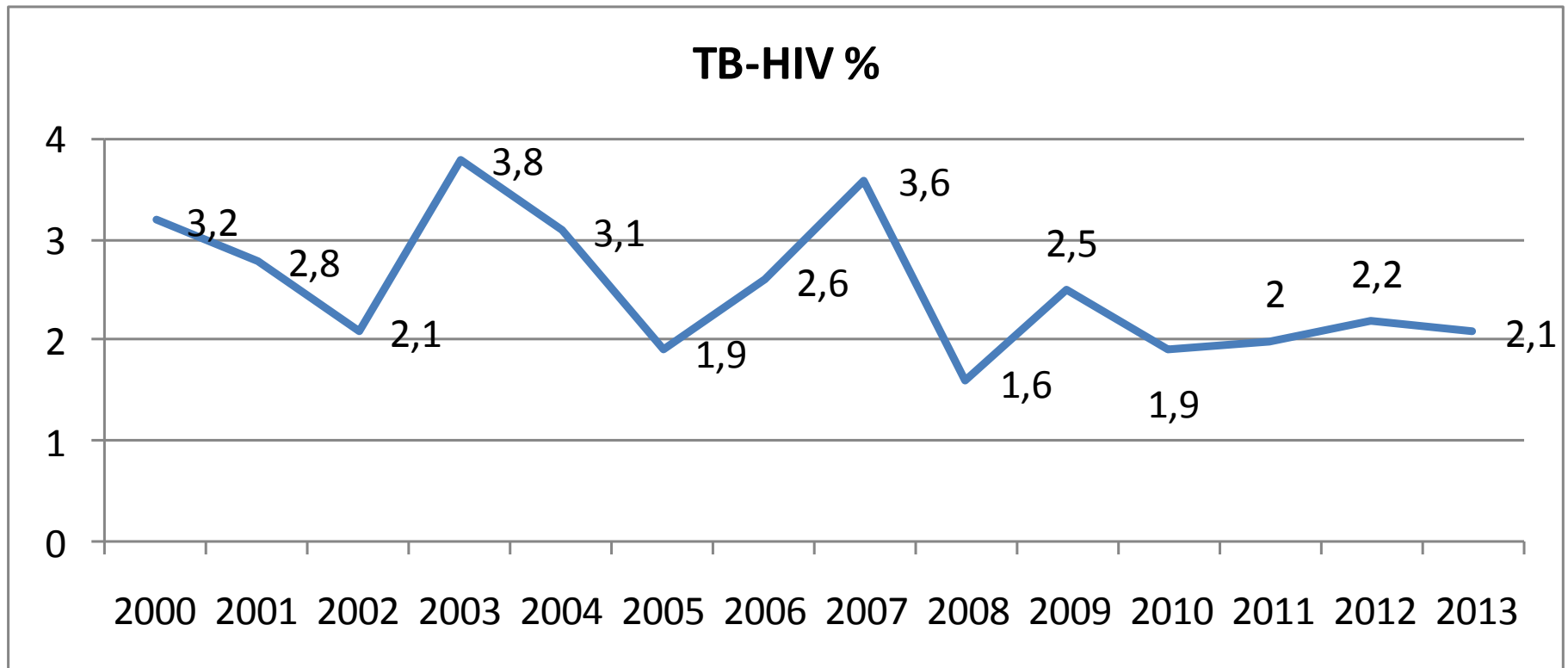


# TB in adults (15+ age-group) and children (0-14 age-group) (per 100,000)



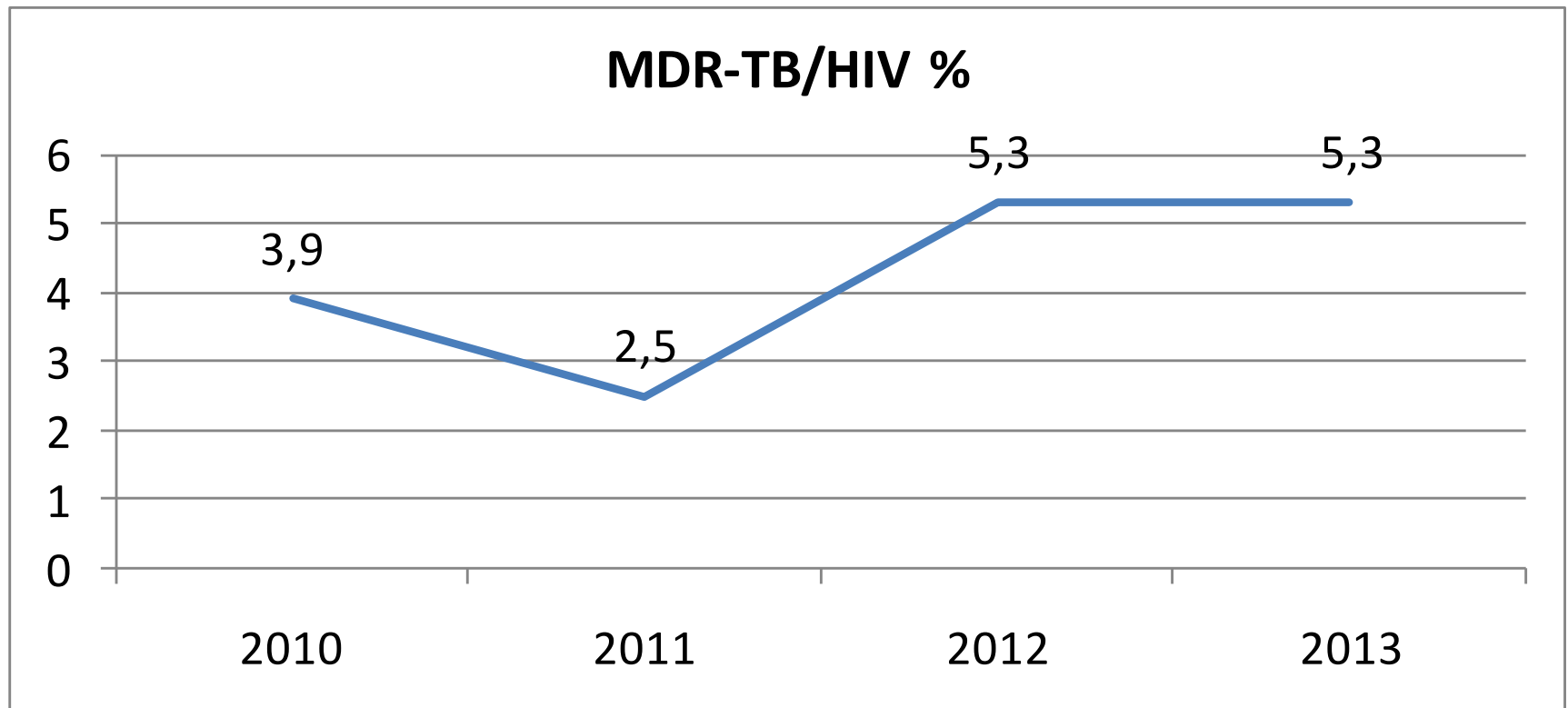
# HIV prevalence among TB (%)

---



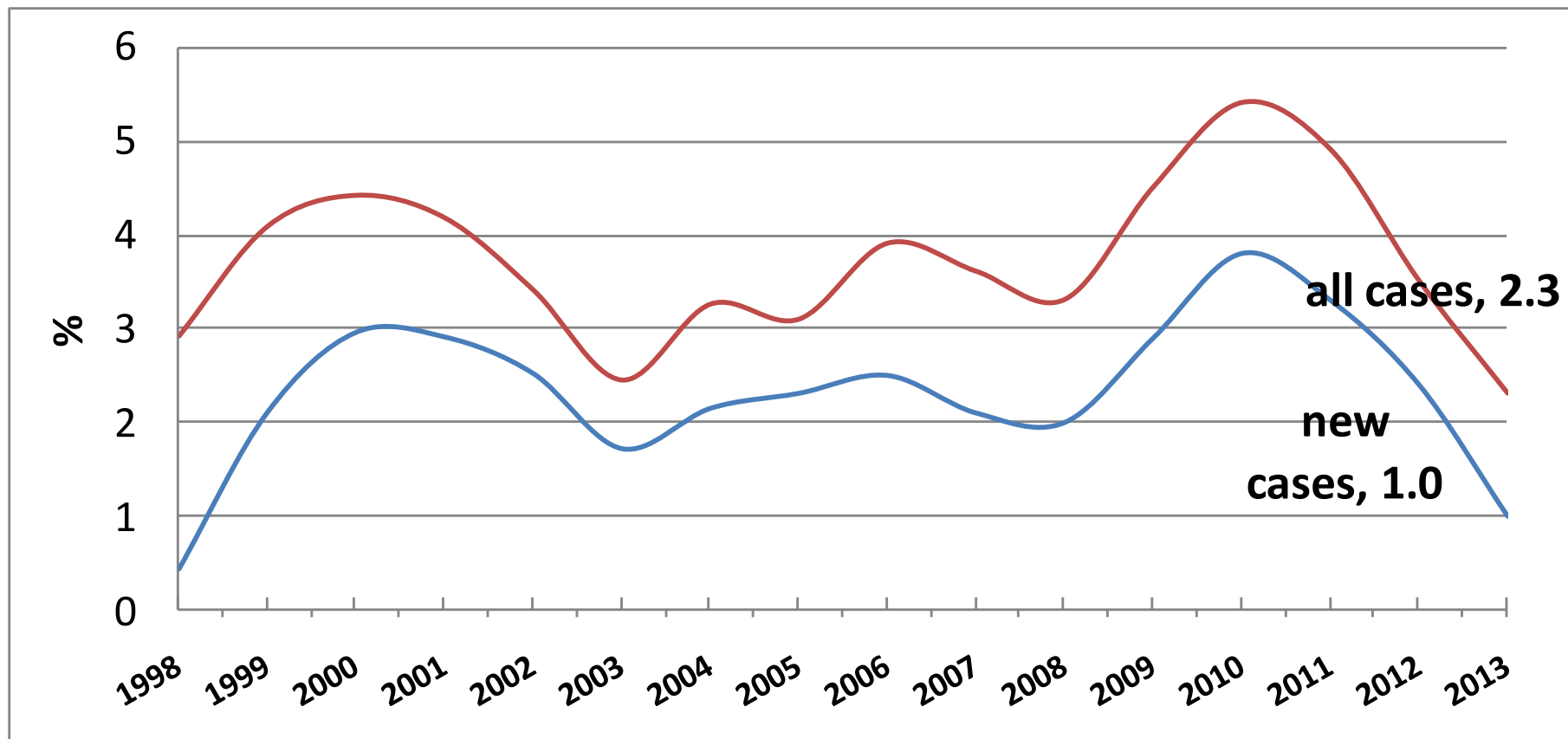
# HIV prevalence among MDR-TB (%)

---

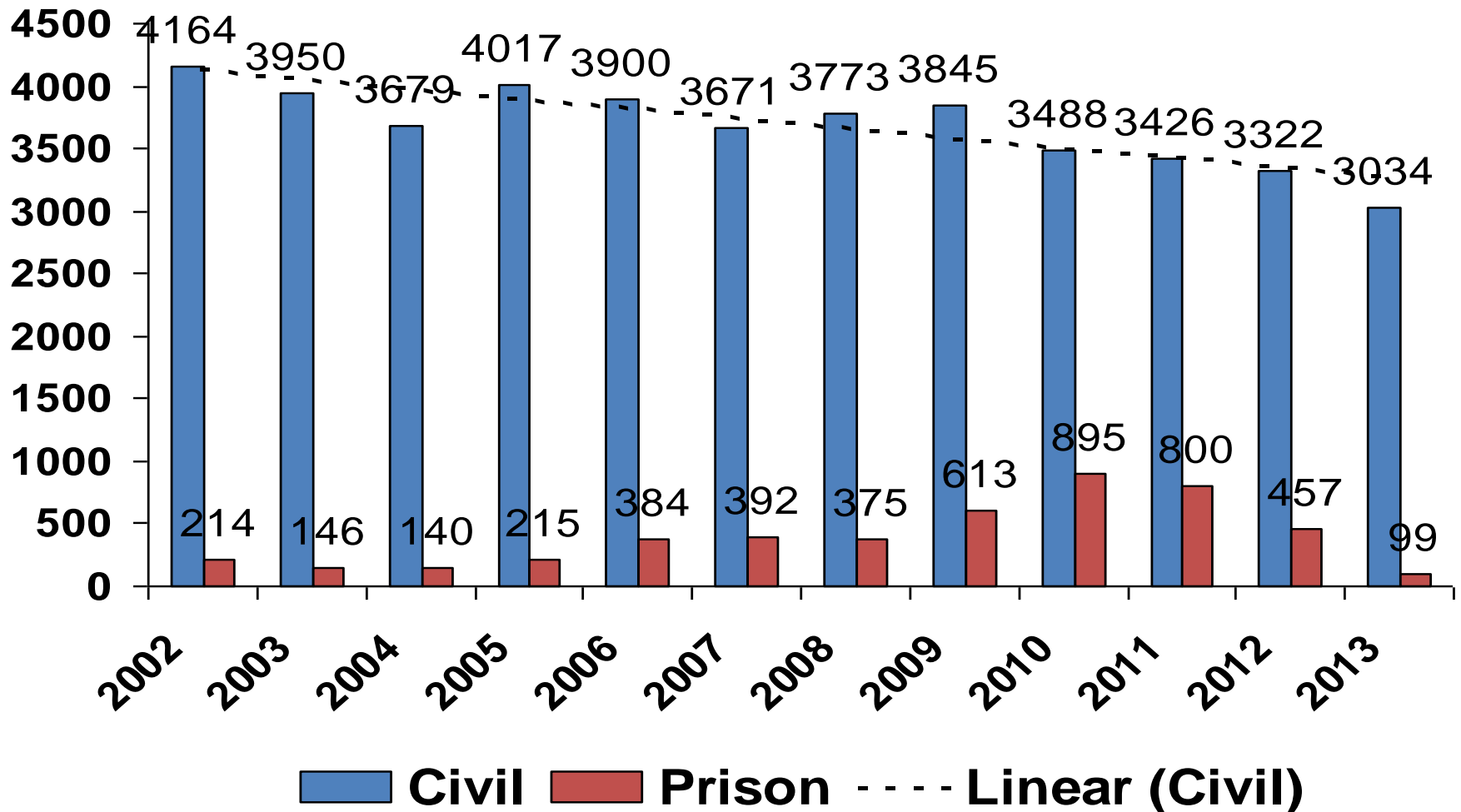


# TB in prisons (per 100 prisoner)

---

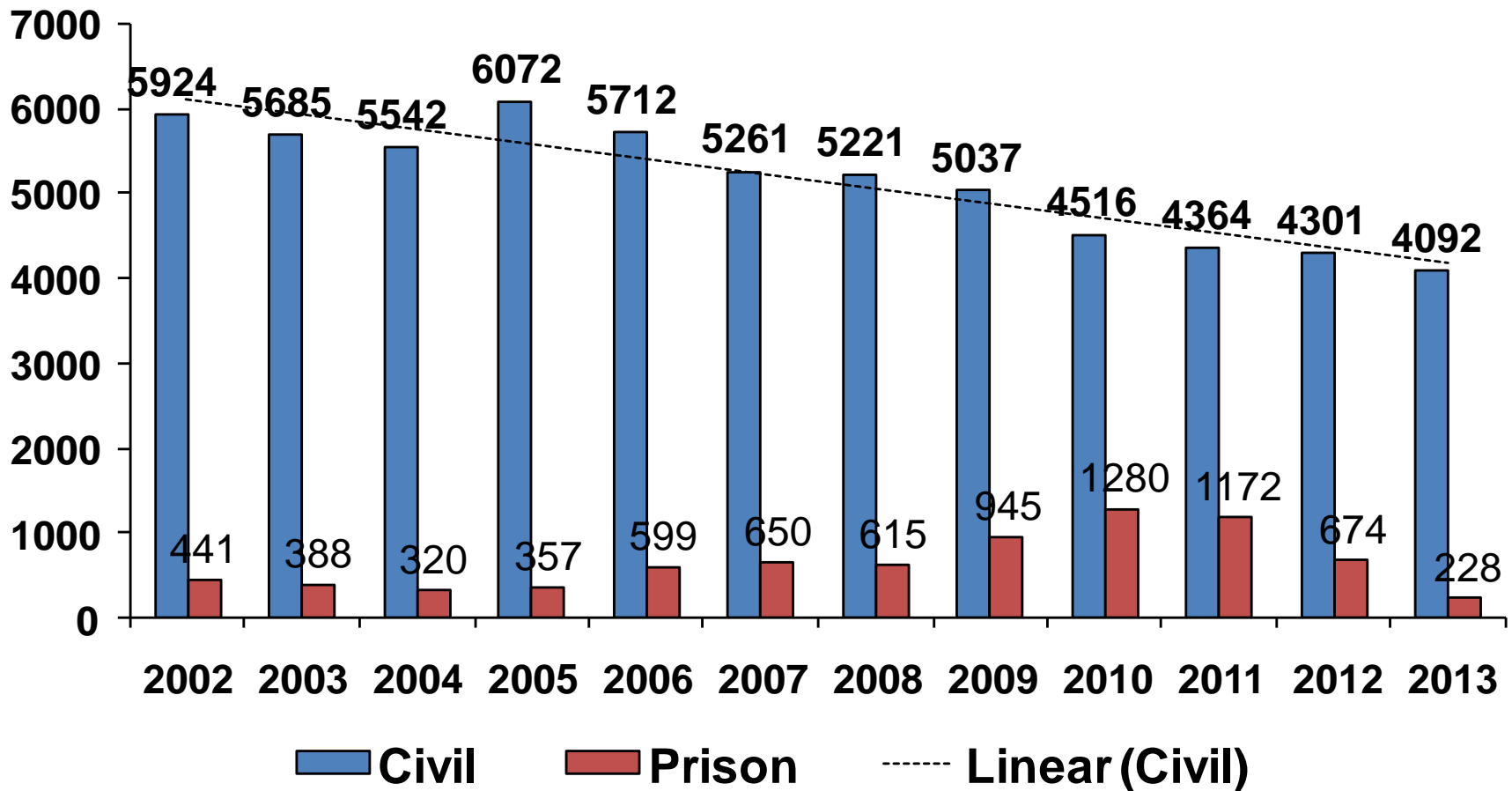


# New TB cases in civil and prison sectors (absolute numbers)



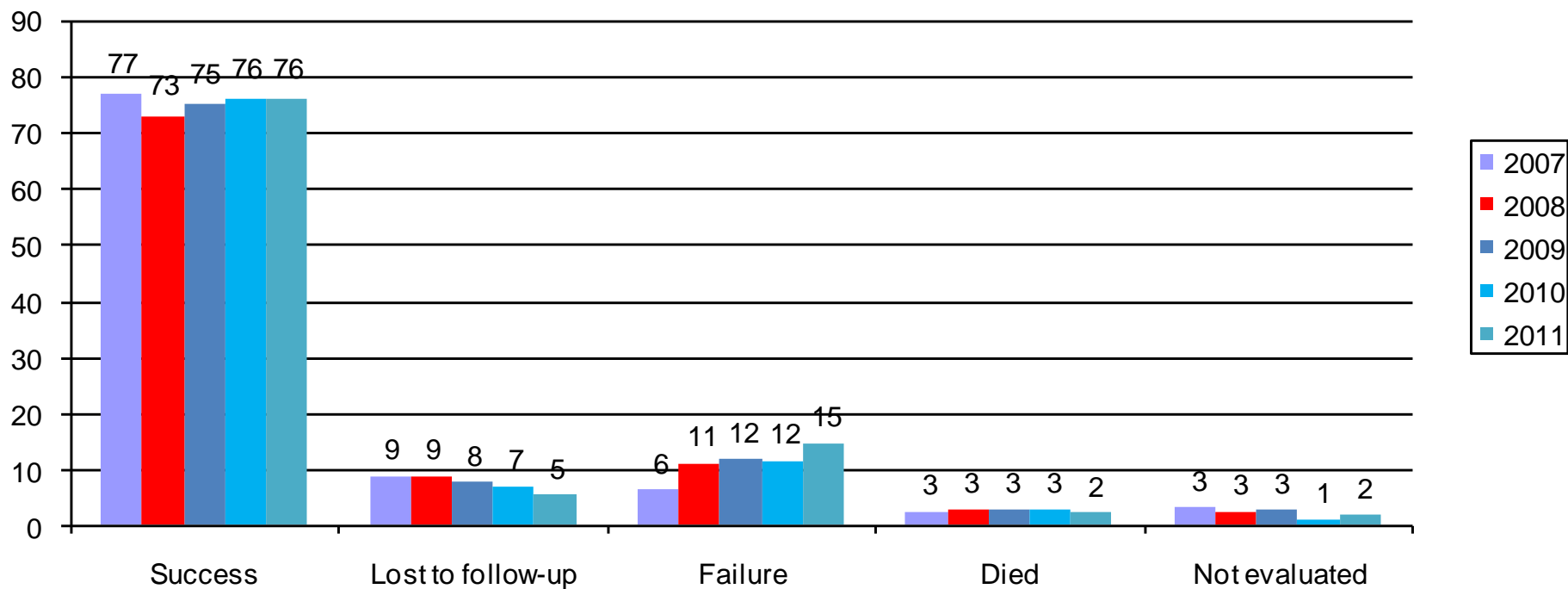
# All TB cases in civil and prison sectors

(absolute numbers)

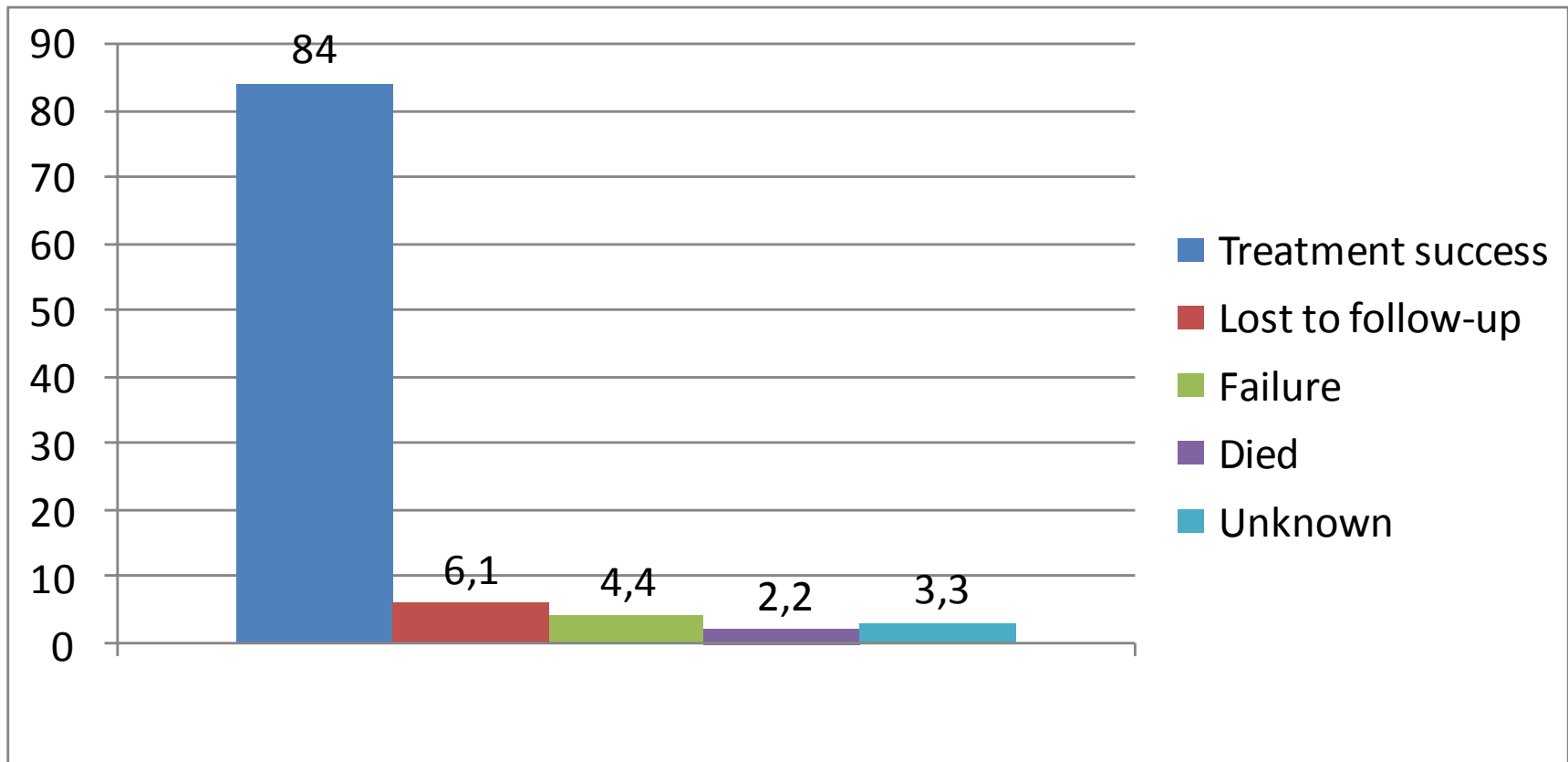


# Treatment Outcome Monitoring of new pulmonary bacteriologically confirmed TB cases (%)

---



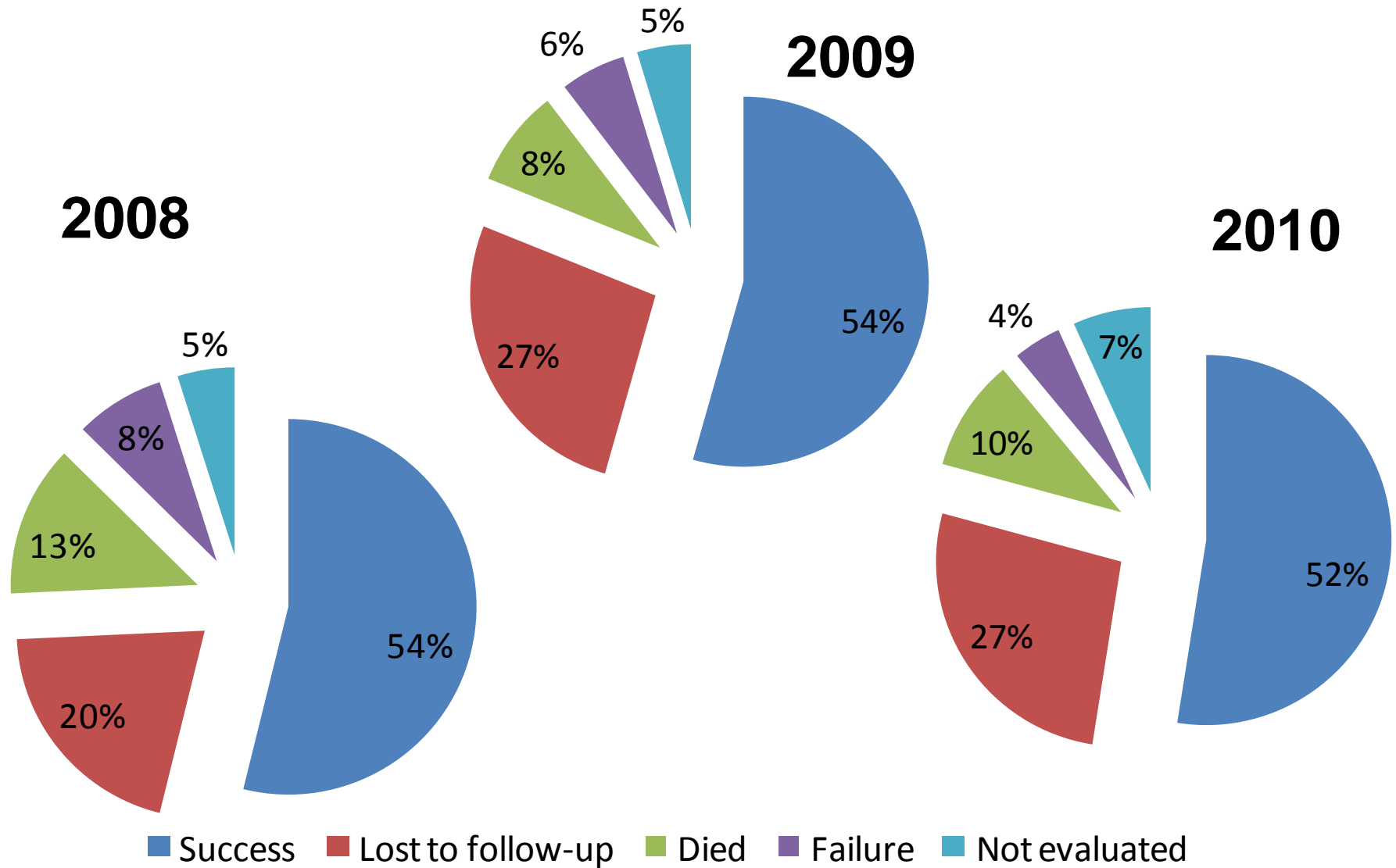
# 1<sup>st</sup> line treatment outcomes of the new pulmonary bacteriologically confirmed TB cases (2012 cohort, %)





# M/XDR-TB (2<sup>nd</sup> line) TOM

---



# M/XDR-TB Treatment outcomes 2011 cohort

